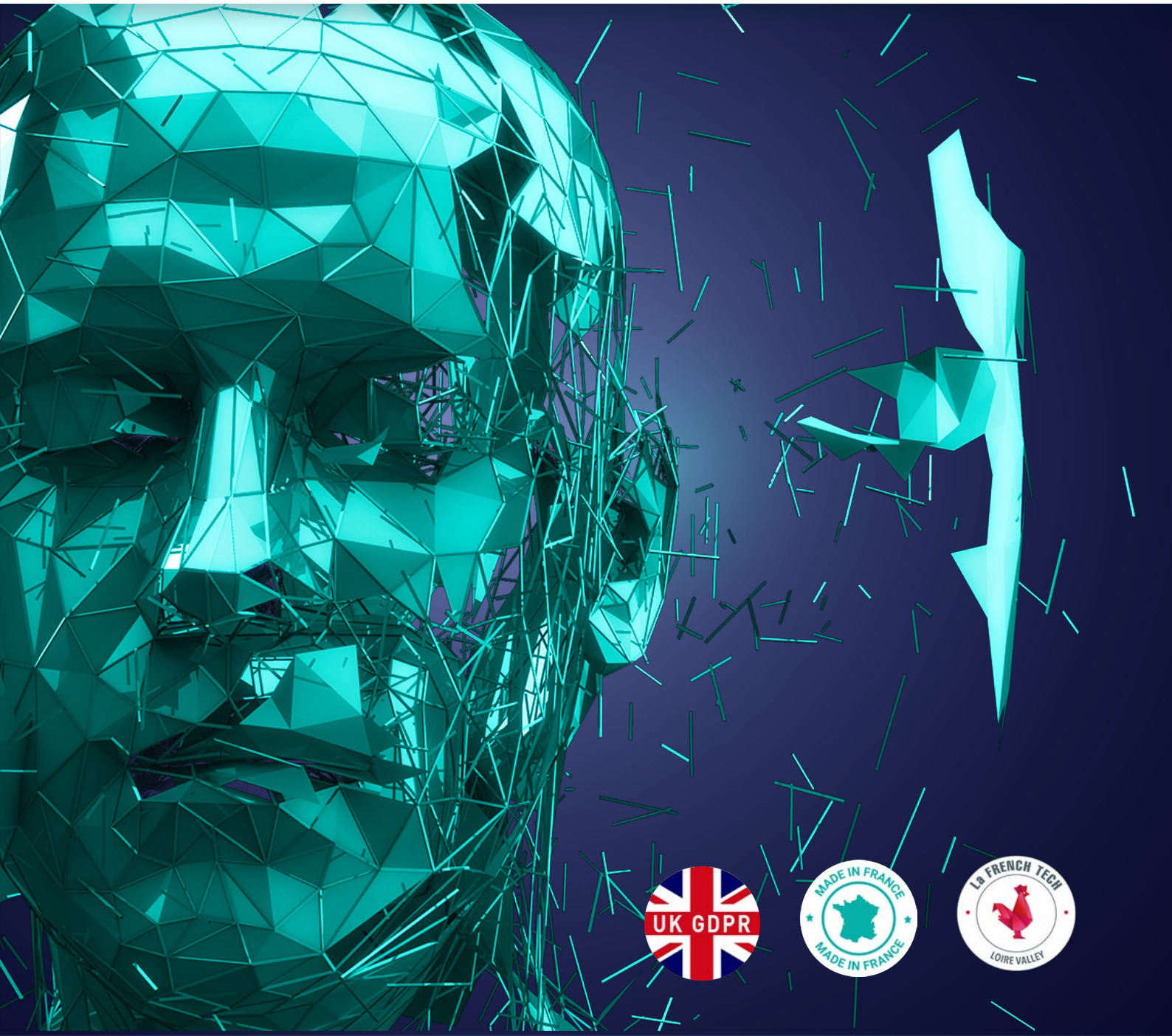




When **sound** makes sense to your **security** and **video** **protection systems**



Sensivic, designer and publisher of **real-time smart audio detection solutions.**

Sensivic has designed a smart audio detection system via an immediate predictive model that alerts a security system in real time when an unexpected sound event occurs. The technology is based on an artificial intelligence engine that continuously adapts to the ambient soundscape and detect sound anomalies in a naturally noisy environment: artificial intelligence, machine learning, edge computing.

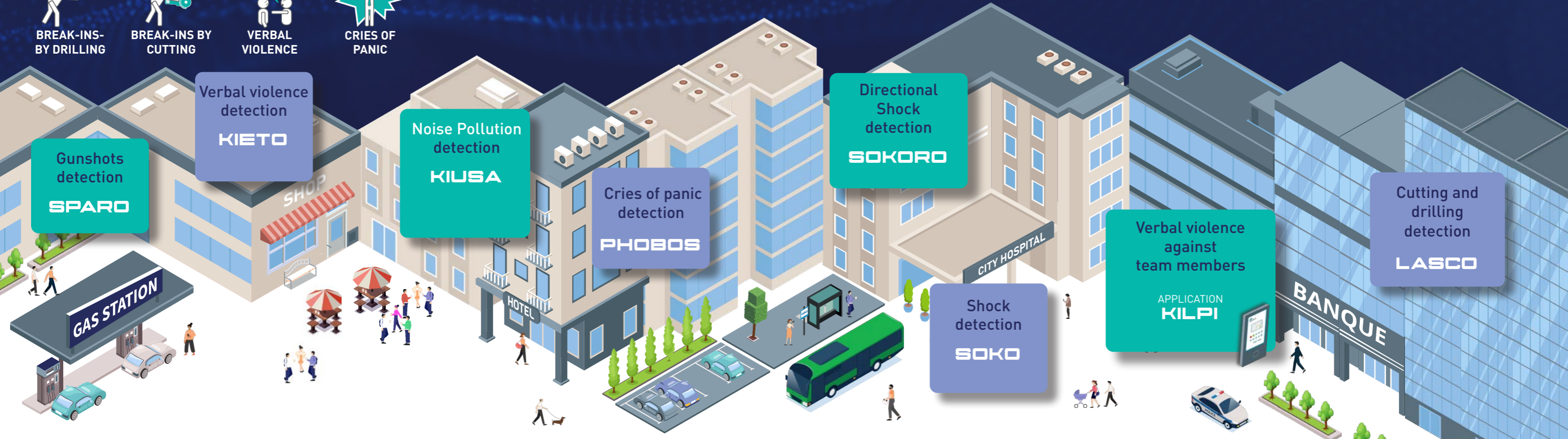


1. Continuous machine-learning of the Soundscape

2. Automatic qualified detection of unexpected sounds

3. Real-time notification

A full range of indoor and outdoor smart audio detectors that alert to **threatening situations**



Smart audio solutions available for **various types of operating systems and implementations :**



Detectors

Plug & Play standalone solutions for integrating security and cctv systems.



Application

Downloadable to smartphones and tablets to protect mobile teams from verbal violence.



OEM / Firmware

Standalone smart audio detections for integrating to third part systems.

Smart audio detection, a technological building block that **improves the performance of security systems.**

- Automatic detection at 360°, 24/7
- Qualified real-time alerts
- Synchronised rotation of PT cameras
- Optimisation of security protocols
- Precious time saving
- Attention drawing



Targeted Sectors



BANKS



PUBLIC BUILDINGS



URBAN SPACE



VENUES



SPORT EVENTS



INDUSTRY



CAR PARKS



LAW ENFORCEMENT



RETAIL



PETROL STATIONS



HEALTH HOSPITALITY



TRANSPORT



SENSITIVE SITES



STAND ALONE



PLUG & PLAY



VMS INTEGRATION



ALARM PANEL INTEGRATION



CCTV INTEGRATION



INTEROPERABLE



WIFI



INDOOR



OUTDOOR

Sensivic solutions can be implemented by integrators and installers of security systems, video protection, access control and anti-intrusion trained by us.



USS SENSIVIC S.A.S.
Le LAB'O, 1 avenue du Champ de Mars
45100 OrLéans, France

T : (+33) 2 38 69 82 96
M : contact@sensivic.com



www.sensivic.com

